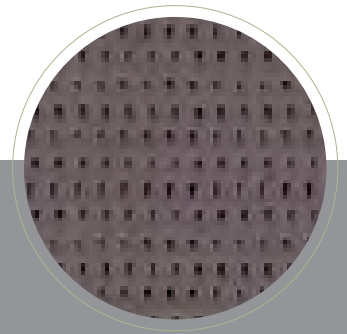


# SUNWORKER Y SUNWORKER METAL

Pieza/rollo de 30 m.l. Ancho estándar 3,00 mtr.



El tejido Sunworker es un tejido técnico que se emplea para la fabricación de toldos, velas, estores, etc.



Este tejido, no se recomienda para toldos de brazo extensible con salidas mayores de 2,25/2,50 metros ni para toldos de más de 4 o 4,50 metros de línea.

TOLDOS  
**Serrano**

**TatamSport**

**a trasluz**  
estores

[www.toldosserrano.com](http://www.toldosserrano.com)

FABRICA Y OFICINAS:

CRTA.COGULLADA 40

50.014 ZARAGOZA - TLF.976 47 22 22

Email- [produccion@toldosserrano.com](mailto:produccion@toldosserrano.com)

ED. 16.02.16

# SUNWORKER

CARACTERISTICAS	TECNICAS-TECHNICAL	CHARACTERISTICS-CARACTERISTIQUES	TECHNIQUES-TECHNISCHE	DATE
Tejido-Fabric-Tissu-Gewebe.....	100% polyester	haute		
Acabado-Finished.....	Enduction PVC	double face		
Ancho-Width-Largueur-Breite	Sunworker y Sunworker Meta.....	300 cm		
Peso-Weight-Poids-Gewicht	Sunworker y Sunworker Meta.....	320 gr/m2		
Espesor-Thickness-Epaisseur-Dicke	Sunworker y Sunworker Meta.....	0,40 mm		
Resistencia desgarre-Tear strength-Resistance à la déchirure-Wleiterreissfestigkeit	Sunworker y Sunworker Meta.....	En daN/5 cm	DIN 53363	Urd 43-Tr22
Resistencia tracción- Tensile strength- Résistance à la rupture- Höchstzugkraft	Sunworker y Sunworker Meta.....	En daN/5 cm	NF EN ISO 19934-1	Urd 220-Tr150
Absorción acústica-sound absorption (Sunworker y Sunworker Metal.....			NF ISO 354	Clase E
Ignífugo-Fireproof-Epreuve du feu-Feuerfest.....			DIN 4102	M-1
				C-1
<b>Longitud de las piezas-Roll lenght-Longueur des pièces-Rollenlänge.....</b>				<b>30/60 ml</b>



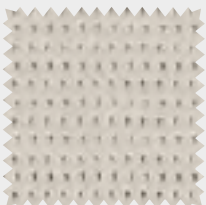
Ref: Lona	Código Art.	Ancho
<b>LO1101</b>	LO1101	300 cm
-	-	-
-	-	-
-	-	-

BLANCO M005



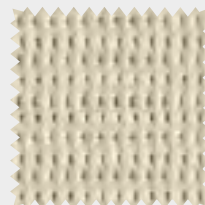
Ref: Lona	Código Art.	Ancho
<b>LO1136</b>	LO1136	300 cm
-	-	-
-	-	-
-	-	-

PEARL M006



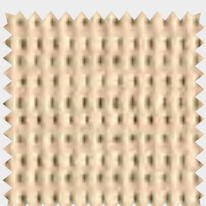
Ref: Lona	Código Art.	Ancho
<b>LO1135</b>	LO1135	300 cm
-	-	-
-	-	-
-	-	-

ELEPHANT M939



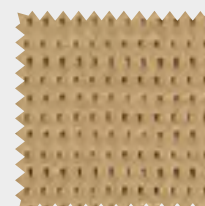
Ref: Lona	Código Art.	Ancho
<b>LO1115</b>	LO1115	300 cm
-	-	-
-	-	-
-	-	-

BEIGE M712



Ref: Lona	Código Art.	Ancho
<b>LO1110</b>	LO1110	300 cm
-	-	-
-	-	-
-	-	-

CHAMPAGNE M711



Ref: Lona	Código Art.	Ancho
<b>LO1132</b>	LO1132	300 cm
-	-	-
-	-	-
-	-	-

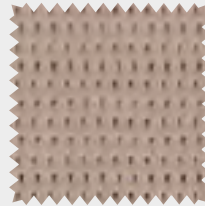
COOKIE M718

# SUNWORKER



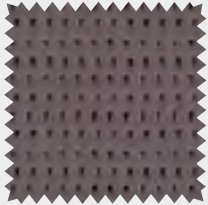
Ref: Lona	Código Art.	Ancho
<b>LO1134</b>	LO1134	300 cm
-	-	-
-	-	-
-	-	-

TAUPE M719



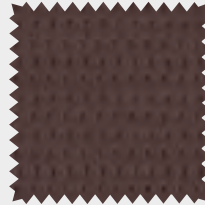
Ref: Lona	Código Art.	Ancho
<b>LO1133</b>	LO1133	300 cm
-	-	-
-	-	-
-	-	-

CLAY M716



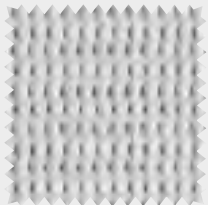
Ref: Lona	Código Art.	Ancho
<b>LO1139</b>	LO1139	300 cm
-	-	-
-	-	-
-	-	-

BISON M715



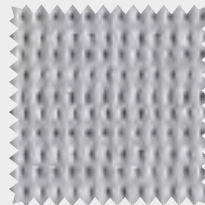
Ref: Lona	Código Art.	Ancho
<b>LO1138</b>	LO1138	300 cm
-	-	-
-	-	-
-	-	-

TURF M717



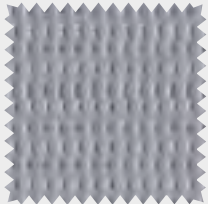
Ref: Lona	Código Art.	Ancho
<b>LO1102</b>	LO1102	300 cm
-	-	-
-	-	-
-	-	-

GREY M654



Ref: Lona	Código Art.	Ancho
<b>LO1116</b>	LO1116	300 cm
-	-	-
-	-	-
-	-	-

IRON M653



Ref: Lona	Código Art.	Ancho
<b>LO1105</b>	LO1105	300 cm
-	-	-
-	-	-
-	-	-

SILVER M652



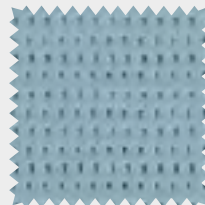
Ref: Lona	Código Art.	Ancho
<b>LO1120</b>	LO1120	300 cm
-	-	-
-	-	-
-	-	-

BRONZE M393



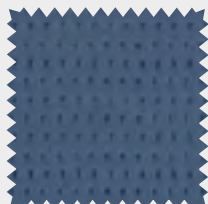
Ref: Lona	Código Art.	Ancho
<b>LO1121</b>	LO1121	300 cm
-	-	-
-	-	-
-	-	-

BLACK M391



Ref: Lona	Código Art.	Ancho
<b>LO1140</b>	LO1140	300 cm
-	-	-
-	-	-
-	-	-

FROST M721



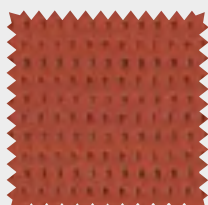
Ref: Lona	Código Art.	Ancho
<b>LO1141</b>	LO1141	300 cm
-	-	-
-	-	-
-	-	-

INDIGO M7224



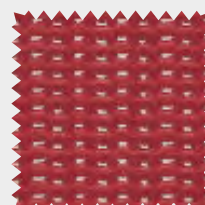
Ref: Lona	Código Art.	Ancho
<b>LO1119</b>	LO1119	300 cm
-	-	-
-	-	-
-	-	-

CHARCOAL M392



Ref: Lona	Código Art.	Ancho
<b>LO1137</b>	LO1137	300 cm
-	-	-
-	-	-
-	-	-

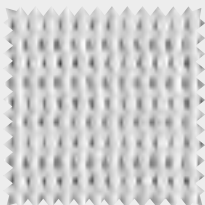
TERRA M720



Ref: Lona	Código Art.	Ancho
<b>LO1117</b>	LO1117	300 cm
-	-	-
-	-	-
-	-	-

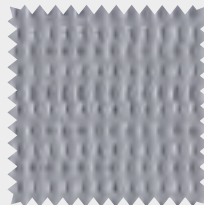
RED M927

# SUNWORKER METAL



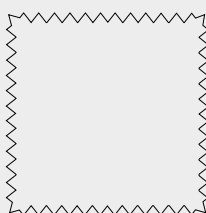
Ref: Lona	Código Art.	Ancho
LO1129	LO1129	300 cm
-	-	-
-	-	-
-	-	-

GREY M654

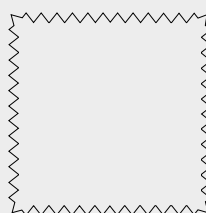


Ref: Lona	Código Art.	Ancho
LO1130	LO1130	300 cm
-	-	-
-	-	-
-	-	-

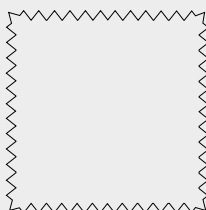
SILVER M652



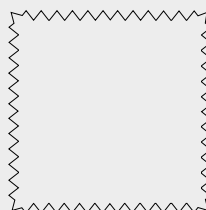
Ref: Lona	Código Art.	Ancho



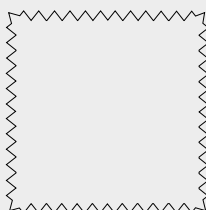
Ref: Lona	Código Art.	Ancho



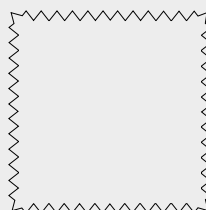
Ref: Lona	Código Art.	Ancho



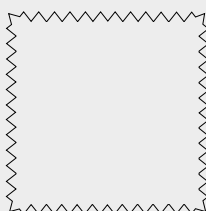
Ref: Lona	Código Art.	Ancho



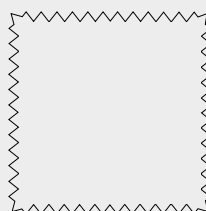
Ref: Lona	Código Art.	Ancho



Ref: Lona	Código Art.	Ancho

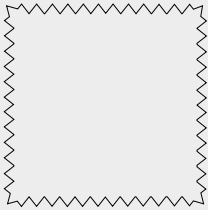


Ref: Lona	Código Art.	Ancho



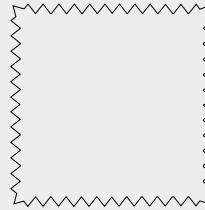
Ref: Lona	Código Art.	Ancho

# SUNWORKER METAL



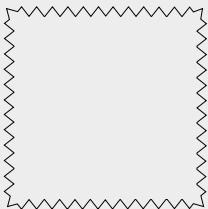
Ref: Lona

Código Art. Ancho



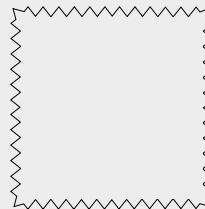
Ref: Lona

Código Art. Ancho



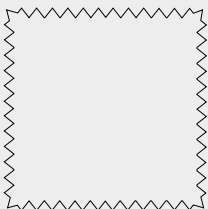
Ref: Lona

Código Art. Ancho



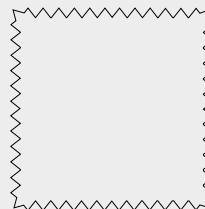
Ref: Lona

Código Art. Ancho



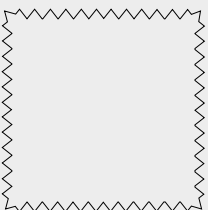
Ref: Lona

Código Art. Ancho



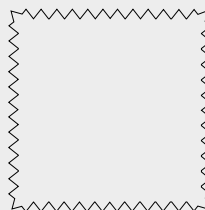
Ref: Lona

Código Art. Ancho



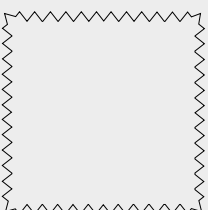
Ref: Lona

Código Art. Ancho



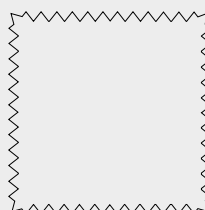
Ref: Lona

Código Art. Ancho



Ref: Lona

Código Art. Ancho



Ref: Lona

Código Art. Ancho

T O L D O S  
Serrano

TatamSport

a trasluz  
estores

SOLICITE SU OFERTA O CUALQUIER  
CONSULTA EN SU CENTRO MAS  
CERCANO DE DISTRIBUCION:



**TOLDOS SERRANO S.L**

EXPOSICION Y VENTA  
AVD.NAVARRA 41-43  
50.010 ZARAGOZA  
TLF.976 33 33 28  
Email.- [comercial@toldosserrano.com](mailto:comercial@toldosserrano.com)

FABRICA Y OFICINAS  
CRTA.COGULLADA 40  
50.014 ZARAGOZA  
TLF.976 47 22 22  
Email.- [produccion@toldosserrano.com](mailto:produccion@toldosserrano.com)