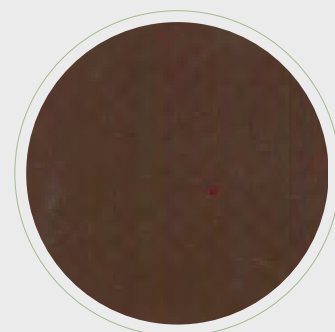


PVC 580 gr IGNIFUGO M-2

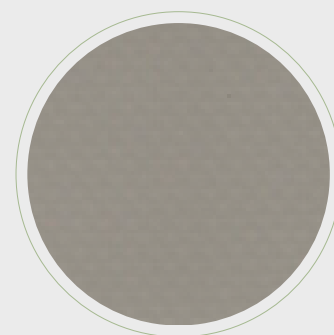
Pieza/rollo de 56 m.l. Ancho estándar 2,50 mtr.



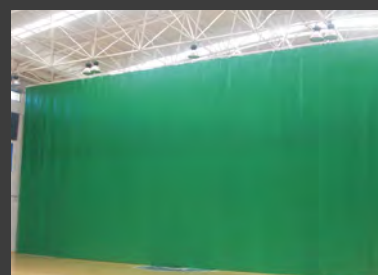
El PVC 580 gr/m² se utiliza para arquitectura textil, toldos industriales y hostelería con una exigencia de producto M-2, instalaciones deportivas, etc

PVC 620 gr IGNIFUGO M-2

Bobina de 250 m.l. Ancho estándar 2,50 mtr.
Pieza/rollo de 70 m.l. Ancho estándar 2,50 mtr.



El PVC 620 gr/m² es utilizado para instalaciones deportivas, cortinas de pabellón, toldos e instalaciones industriales.



www.toldosserrano.com

FABRICA Y OFICINAS:

CRTA.COGULLADA 40

50.014 ZARAGOZA - TLF.976 47 22 22

Email- produccion@toldosserrano.com

TOLDOS
Serrano

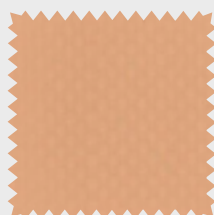
TatamSport

a trasluz
estores

ED. 15.02.16

PVC 580 gr IGNIFUGO M-2

| CARACTERISTICAS TECNICAS-TECHNICAL CHARACTERISTICS-CARACTERISTIQUES TECHNIQUES-TECHNISCHE | DATE |
|---|------|
| Tejido-Fabric-Tissu-Gewebe.....Polyester AT 1100 dtex | |
| Ancho-Width-Largueur-Breite.....250 cm | |
| Peso-Weight-Poids-Gewicht.....580 gr/m2 | |
| Espesor-Thickness-Epaisseur-Dicke.....0,48 mm | |
| Acabado-Finish-Finition-Fertigung.....Lacado 2 caras-Lacquered 2 faces | |
| Resistencia desgarre-Tear strength-Resistance à la déchirure-Weiterreissfestigkeit | |
| Urdimbre-Warp-Chaine-Kette.....270 daN/5 cm | |
| Trama-Weft-Trame-Schuss.....230 daN/5 cm | |
| Resistencia tracción-Tensile strength-Résistance à la rupture-Höchstzugkraft | |
| Urdimbre-Warp-Cahine-Kette.....30 daN | |
| Trama-Weft-Trame-Schuss.....23 daN | |
| Adherencia-Adhesion-Adhérence-Haftung.....10 daN/5 cm | |
| Ignífugo-Fireproof-Epreuve du feu-Feuerfest.....FR M2 | |
| Longitud de las piezas-Roll lenght-Longueur des pièces-Rollenlänge.....56 ml | |



Color RAL aproximado

| Ref: Lona | Código Art. | Ancho |
|-----------|-------------|--------|
| LO92255 | 2022255 | 250 cm |
| - | - | - |
| - | - | - |
| - | - | - |

BEIGE RAL 1001



Color RAL aproximado

| Ref: Lona | Código Art. | Ancho |
|-----------|-------------|--------|
| LO92236 | 2022136 | 250 cm |
| - | - | - |
| - | - | - |
| - | - | - |

PLATA RAL 7047



Color RAL aproximado

| Ref: Lona | Código Art. | Ancho |
|-----------|-------------|--------|
| LO92238 | 2022138 | 250 cm |
| - | - | - |
| - | - | - |
| - | - | - |

GRANATE RAL 3005



Color RAL aproximado

| Ref: Lona | Código Art. | Ancho |
|-----------|-------------|--------|
| LO92232 | 2022132 | 250 cm |
| - | - | - |

MARRON OSCURO RAL 8014



Color RAL aproximado

| Ref: Lona | Código Art. | Ancho |
|-----------|-------------|--------|
| LO92245 | 2022245 | 250 cm |
| - | - | - |
| - | - | - |
| - | - | - |

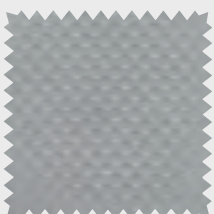
VERDE OSCURO RAL 6005



Color RAL aproximado

| Ref: Lona | Código Art. | Ancho |
|-----------|-------------|--------|
| LO92237 | 2022137 | 250 cm |
| - | - | - |
| - | - | - |
| - | - | - |

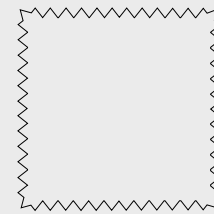
GRIS OSCURO RAL 7037



Color RAL aproximado

| Ref: Lona | Código Art. | Ancho |
|-----------|-------------|--------|
| LO92233 | 2022133 | 250 cm |
| - | - | - |
| - | - | - |
| - | - | - |

METAL RAL 7038



Color RAL aproximado

| Ref: Lona | Código Art. | Ancho |
|-----------|-------------|-------|
| - | - | - |

PVC 620 gr IGNIFUGO M-2

CARACTERISTICAS TECNICAS-TECHNICAL CHARACTERISTICS-CARACTERISTIQUES TECHNIQUES-TECHNISCHE DATE

| | | |
|---|----------------------------------|---------------|
| Tejido-Fabric-Tissu-Gewebe..... | Polyester | AT 1100 |
| dtexAncho-Width-Largueur-Breite..... | | 250 cm |
| Peso-Weight-Poids-Gewicht..... | UNE-EN ISO 2286-2 | 620 gr/m2 |
| Acabado-Finish-Finition-Fertigung..... | Lacado 2 caras-Lacquered 2 faces | |
| Resistencia desgarre-Tear strength-Resistance à la déchirure-Wleiterreissfestigkeit | | |
| Urdimbre-Warp-Chaine-Kette..... | UNE 53363 | 26 daN |
| Trama-Weft-Trame-Schuss..... | UNE 53363 | 20 daN |
| Resistencia tracción-Tensile strength-Résistance à la rupture-Höchstzugkraft | | |
| Urdimbre-Warp-Cahine-Kette..... | UNE-EN-ISO-1421 | 240 daN/5 cm |
| Trama-Weft-Trame-Schuss..... | UNE-EN-ISO-1421 | 250 daN/5 cm |
| Adherencia-Adhesion-Adhérence-Haftung..... | UNE-EN-ISO 2411 | 10 daN/5 cm |
| Ignífugo-Fireproof-Epreuve du feu-Feuerfest..... | UNE 23727-90 | FR M2 |
| Longitud de las piezas-Roll length-Longueur des pièces-Rollenlänge..... | | 250 ml |



| | | |
|-----------|-------------|--------|
| Ref: Lona | Código Art. | Ancho |
| LO92252 | 2022252 | 250 cm |
| - | - | - |
| - | - | - |
| - | - | - |

Color RAL aproximado FUCSIA RAL 4010



| | | |
|-----------|-------------|--------|
| Ref: Lona | Código Art. | Ancho |
| LO92220 | 2022120 | 250 cm |
| - | - | - |
| - | - | - |
| - | - | - |

Color RAL aproximado CREMA RAL 1014



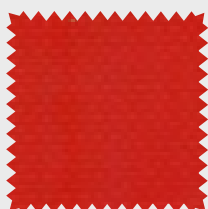
| | | |
|-----------|-------------|--------|
| Ref: Lona | Código Art. | Ancho |
| LO92242 | 2022142 | 250 cm |
| - | - | - |
| - | - | - |
| - | - | - |

Color RAL aproximado ROSA RAL 4003



| | | |
|-----------|-------------|--------|
| Ref: Lona | Código Art. | Ancho |
| LO92214 | 2022114 | 250 cm |
| - | - | - |
| - | - | - |
| - | - | - |

Color RAL aproximado VAINILLA RAL 1015



| | | |
|-----------|-------------|--------|
| Ref: Lona | Código Art. | Ancho |
| LO92205 | 2022105 | 250 cm |
| - | - | - |
| - | - | - |
| - | - | - |

Color RAL aproximado ROJO RAL 3002



| | | |
|-----------|-------------|--------|
| Ref: Lona | Código Art. | Ancho |
| LO92230 | 2022130 | 250 cm |
| - | - | - |
| - | - | - |
| - | - | - |

Color RAL aproximado MARFIL RAL 1013



| | | |
|-----------|-------------|--------|
| Ref: Lona | Código Art. | Ancho |
| LO92204 | 2022104 | 250 cm |
| - | - | - |
| - | - | - |
| - | - | - |

Color RAL aproximado Naranja RAL 2004



| | | |
|-----------|-------------|--------|
| Ref: Lona | Código Art. | Ancho |
| LO92203 | 2022103 | 250 cm |
| - | - | - |
| - | - | - |
| - | - | - |

Color RAL aproximado AMARILLO RAL 1003

PVC 620 gr IGNIFUGO M-2

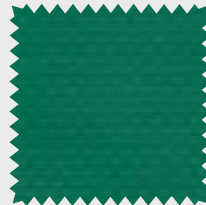


Color RAL aproximado

| Ref: Lona | Código Art. | Ancho |
|-----------|-------------|--------|
| LO92253 | 2022253 | 250 cm |

| | | |
|---|---|---|
| - | - | - |
| - | - | - |
| - | - | - |

VERDE PISTACHO



Color RAL aproximado

| Ref: Lona | Código Art. | Ancho |
|-----------|-------------|--------|
| LO92216 | 2022116 | 250 cm |

| | | |
|---|---|---|
| - | - | - |
| - | - | - |
| - | - | - |

Verde RAL 6026



Color RAL aproximado

| Ref: Lona | Código Art. | Ancho |
|-----------|-------------|--------|
| LO92251 | 2022251 | 250 cm |

| | | |
|---|---|---|
| - | - | - |
| - | - | - |
| - | - | - |

AZUL OSC. RAL 5013



Color RAL aproximado

| Ref: Lona | Código Art. | Ancho |
|-----------|-------------|--------|
| LO92213 | 2022113 | 250 cm |

| | | |
|---|---|---|
| - | - | - |
| - | - | - |
| - | - | - |

Verde RAL 6024



Color RAL aproximado

| Ref: Lona | Código Art. | Ancho |
|-----------|-------------|--------|
| LO92210 | 2022110 | 250 cm |

| | | |
|---|---|---|
| - | - | - |
| - | - | - |
| - | - | - |

AZUL RAL 5010

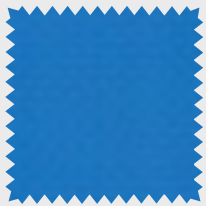


Color RAL aproximado

| Ref: Lona | Código Art. | Ancho |
|-----------|-------------|--------|
| LO92217 | 2022117 | 250 cm |

| | | |
|---|---|---|
| - | - | - |
| - | - | - |
| - | - | - |

NEGRO RAL 9017

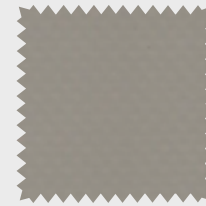


Color RAL aproximado

| Ref: Lona | Código Art. | Ancho |
|-----------|-------------|--------|
| LO92215 | 2022115 | 250 cm |

| | | |
|---|---|---|
| - | - | - |
| - | - | - |
| - | - | - |

AZUL RAL 5015



Color RAL aproximado

| Ref: Lona | Código Art. | Ancho |
|-----------|-------------|--------|
| LO92208 | 2022108 | 250 cm |

| | | |
|---|---|---|
| - | - | - |
| - | - | - |
| - | - | - |

GRIS RAL 7030

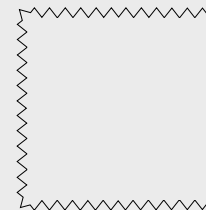


Color RAL aproximado

| Ref: Lona | Código Art. | Ancho |
|-----------|-------------|--------|
| LO92201 | 2022101 | 250 cm |

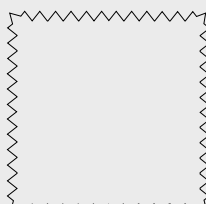
| | | |
|---|---|---|
| - | - | - |
| - | - | - |
| - | - | - |

BLANCO RAL 9016



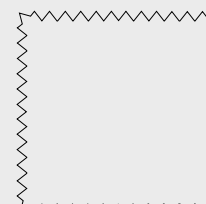
Color RAL aproximado

| Ref: Lona | Código Art. | Ancho |
|-----------|-------------|-------|
|-----------|-------------|-------|



Color RAL aproximado

| Ref: Lona | Código Art. | Ancho |
|-----------|-------------|-------|
|-----------|-------------|-------|



Color RAL aproximado

| Ref: Lona | Código Art. | Ancho |
|-----------|-------------|-------|
|-----------|-------------|-------|

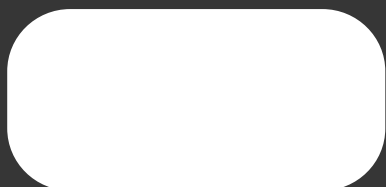
T O L D O S
Serrano 

TatamSport 

a trasluz 
estores

WWW.TOLDOSSERRANO.COM

SOLICITE SU OFERTA O CUALQUIER
CONSULTA EN SU CENTRO MAS
CERCANO DE DISTRIBUCION:



TOLDOS SERRANO S.L

EXPOSICION Y VENTA
AVD.NAVARRA 41-43
50.010 ZARAGOZA
TLF.976 33 33 28
comercial@toldosserrano.com

FABRICA Y OFICINAS
CRTA.COYULLADA 40
50.014 ZARAGOZA
TLF.976 47 22 22
produccion@toldosserrano.com