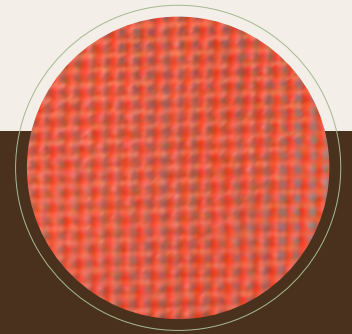


# MALLA PVC 250 gr

Malla-PVC 250gr: Bobina de 100 m.l. Ancho estándar 210cm

Malla-PVC 250gr (LO5213-NARANJA): Bobina de 100 m.l. Ancho Estándar 220 cm



La malla perforada PVC 250 gr/m2 se emplea para cubrir y proteger superficies, protección en obra, tapar mercancías, etc.



[www.toldosserrano.com](http://www.toldosserrano.com)

FABRICA Y OFICINAS:

CRTA.COGULLADA 40

50.014 ZARAGOZA - TLF.976 47 22 22

Email- [produccion@toldosserrano.com](mailto:produccion@toldosserrano.com)

TOLDOS  
**Serrano**

**TatamSport**

**a trasluz**  
estores

ED. 15.02.16

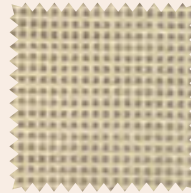
# MALLA PVC 250 gr

CARACTERISTICAS TECNICAS-TECHNICAL CHARACTERISTICS-CARACTERISTIQUES TECHNIQUES-TECHNISCHE DATE

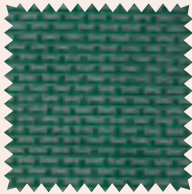
Tejido-Fabric-Tissu-Gewebe.....100% PES - 1100 dtex  
 Ancho-Width-Largueur-Breite.....210/220 cm  
 Peso-Weight-Poids-Gewicht.....250 gr/m2  
 Resistencia tracción-Tensile strength-Résistance à la rupture-Höchstzugkraft  
 Urdimbre-Warp-Cahine-Kette.....1800 N/5 cm  
 Trama-Weft-Trame-Schuss.....1600 N/5 cm  
 Adherencia-Adhesion-Adhérence-Haftung.....40 daN/5 cm  
**Longitud de las piezas-Roll length-Longueur des pièces-Rollenlänge.....100 ml**



Ref: Lona Código Art. Ancho  
**LO5202** PER052502 210 cm  
 - - -  
 Color RAL aproximado BLANCO 9010



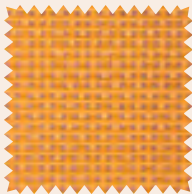
Ref: Lona Código Art. Ancho  
**LO5211** PER052511 210 cm  
 - - -  
 Color RAL aproximado VAINILLA 1015



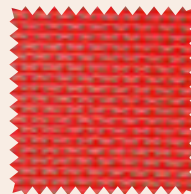
Ref: Lona Código Art. Ancho  
**LO5203** PER052503 210 cm  
 - - -  
 Color RAL aprox VERDE OSCURO 6005



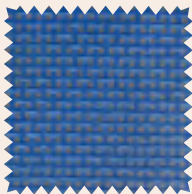
Ref: Lona Código Art. Ancho  
**LO5206** PER052506 210 cm  
 - - -  
 Color RAL aproximado VERDE R 6010



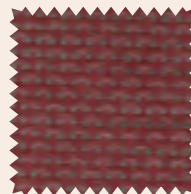
Ref: Lona Código Art. Ancho  
**LO5205** PER052505 210 cm  
 - - -  
 Color RAL aprox AMARILLO 1003



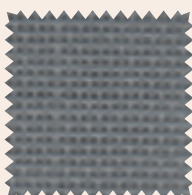
Ref: Lona Código Art. Ancho  
**LO5208** PER052508 210 cm  
 - - -  
 Color RAL aproximado ROJO 3002



Ref: Lona Código Art. Ancho  
**LO5209** PER052509 210 cm  
 - - -  
 Color RAL aproximado AZUL 5005



Ref: Lona Código Art. Ancho  
**LO5212** PER052512 210 cm  
 - - -  
 Color RAL aproximado MARRON 3009



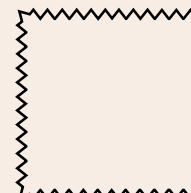
Ref: Lona Código Art. Ancho  
**LO5207** PER052507 210 cm  
 - - -  
 Color RAL aproximado GRIS 7037



Ref: Lona Código Art. Ancho  
**LO5204** PER052504 210 cm  
 - - -  
 Color RAL aproximado NEGRO 9005

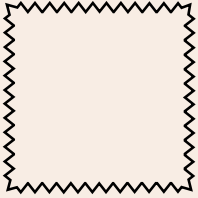


Ref: Lona Código Art. Ancho  
**LO5213** PER052513 220 cm  
 - - -  
 Color RAL aprox NARANJA BUTANO 2004

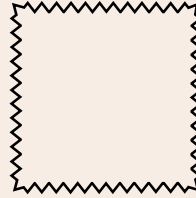


Ref: Lona Código Art. Ancho

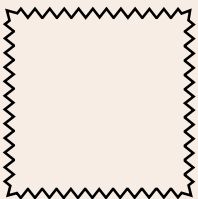
# MALLA PVC 250 gr



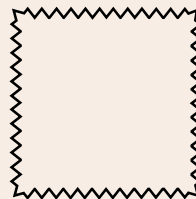
Ref: Lona      Código Art.      Ancho



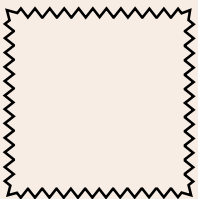
Ref: Lona      Código Art.      Ancho



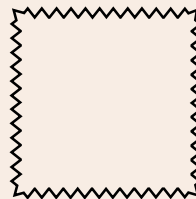
Ref: Lona      Código Art.      Ancho



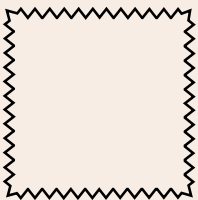
Ref: Lona      Código Art.      Ancho



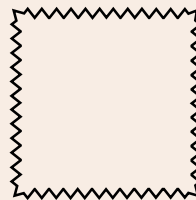
Ref: Lona      Código Art.      Ancho



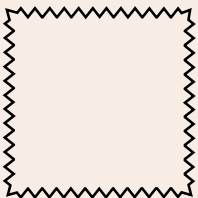
Ref: Lona      Código Art.      Ancho



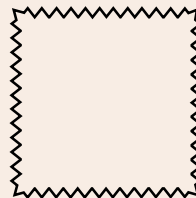
Ref: Lona      Código Art.      Ancho



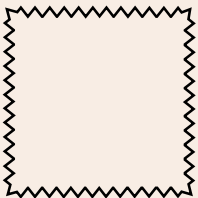
Ref: Lona      Código Art.      Ancho



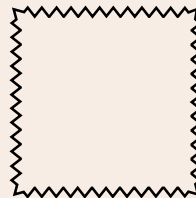
Ref: Lona      Código Art.      Ancho



Ref: Lona      Código Art.      Ancho



Ref: Lona      Código Art.      Ancho



Ref: Lona      Código Art.      Ancho

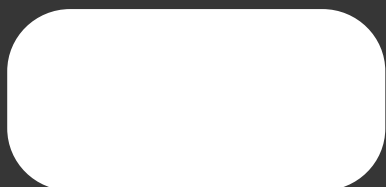
T O L D O S  
**Serrano** 

**TatamSport** 

**a trasluz**   
estores

[WWW.TOLDOSSERRANO.COM](http://WWW.TOLDOSSERRANO.COM)

SOLICITE SU OFERTA O CUALQUIER  
CONSULTA EN SU CENTRO MAS  
CERCANO DE DISTRIBUCION:



**TOLDOS SERRANO S.L**

EXPOSICION Y VENTA  
AVD.NAVARRA 41-43  
50.010 ZARAGOZA  
TLF.976 33 33 28  
[comercial@toldosserrano.com](mailto:comercial@toldosserrano.com)

FABRICA Y OFICINAS  
CRTA.COGULLADA 40  
50.014 ZARAGOZA  
TLF.976 47 22 22  
[produccion@toldosserrano.com](mailto:produccion@toldosserrano.com)